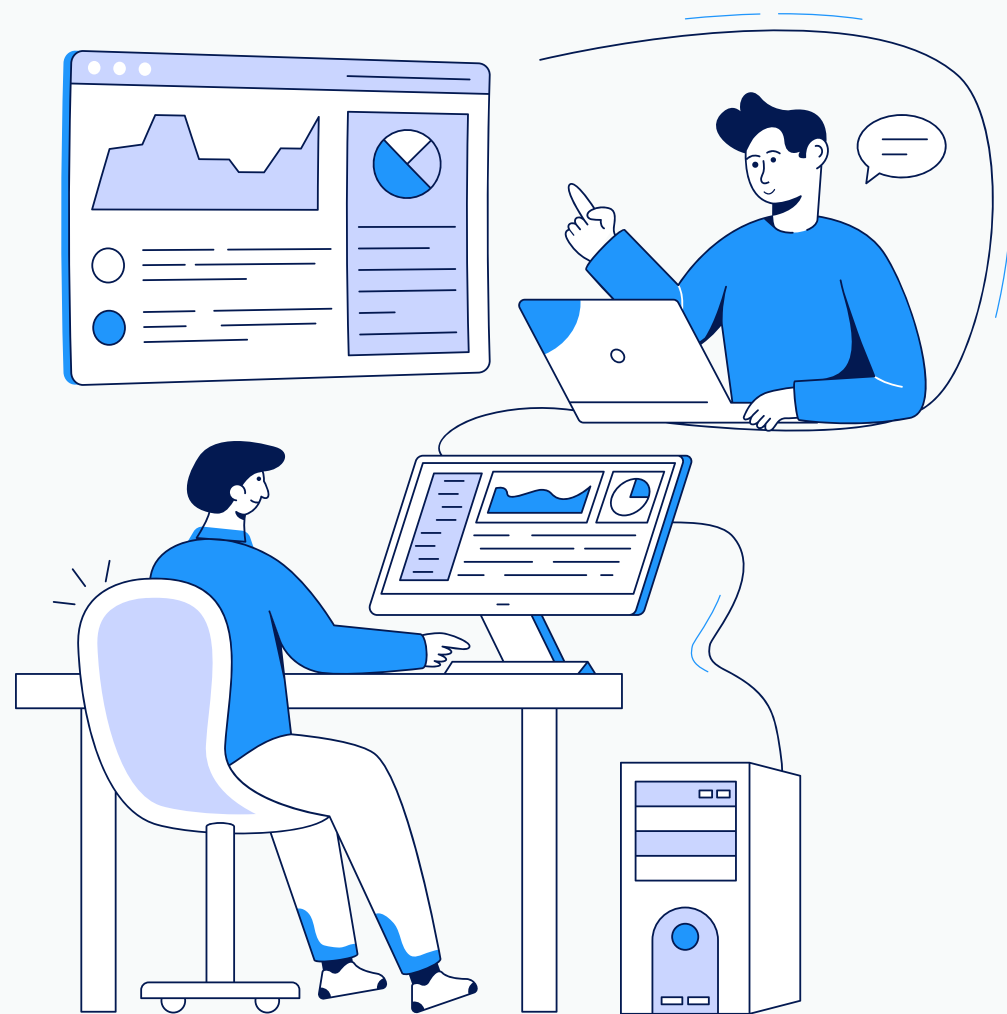
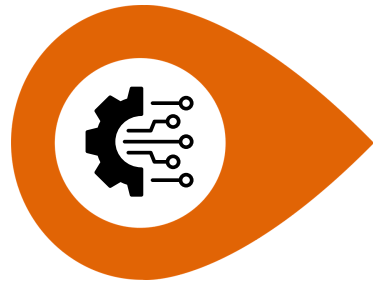


Guide to Completing the Progress Report Form for Proactive Researchers

Office of Research
Administration,
Chiang Mai University

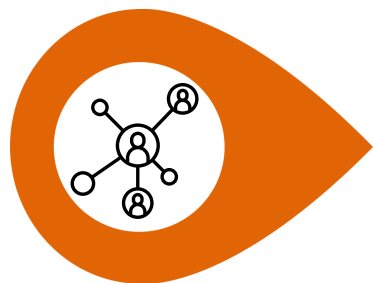


Submission guidelines for Proactive Researchers.



Advanced/Targeted Postdoctoral Program (Science) for three years.

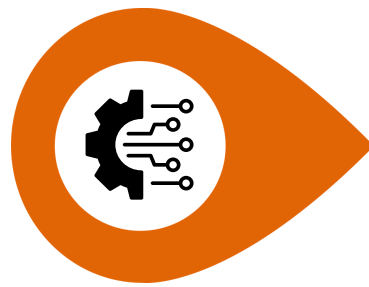
1. Publication Q1-Q2 in the ISI Web of Science (Core Collection) international database, in partnership with an advisor.
2. This entails serving as the First/Corresponding Author for a minimum of one article annually with at least one publication in a Q1 journal within the three-year period.
3. Proactive researchers present project proposals to external funding sources during their initial year.
4. Research funding from external sources, in collaboration with an advisor, totaling a minimum of 1 million baht within a three-year period, and...
5. Knowledge utilization output, a prototype of a novel process technology at TRL 3, or a patent application (application number)



Advanced/Targeted Postdoctoral Program (Humanities-Social Sciences) for a duration of three years.

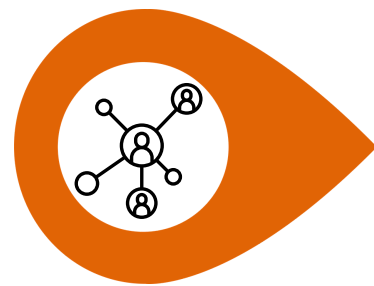
1. Published in the Q1-Q4 rankings of the international Scopus database, in collaboration with an advisor, as the First/Corresponding Author on at least two publications within a three-year period. The initial publication must have been submitted by the end of the second year.
2. Proactive researchers present project proposals to external funding sources during their initial year.
3. Research funding from external sources, in collaboration with an advisor, totaling a minimum of 500,000 baht within three years, and...
4. At least one knowledge utilization output, public policy contribution, or equivalent output, submitted within the past three years.

Submission guidelines for Proactive Researchers.



Advanced/Targeted Post-Master's Program (Science) for three years.

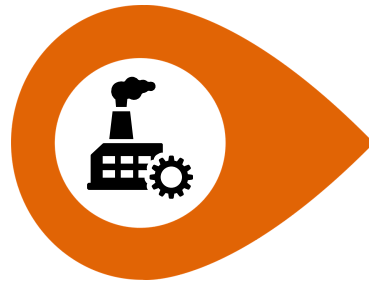
1. **At least two publications in Q1–Q2 journals indexed in the ISI Web of Science (Core Collection), in collaboration with the advisor, with the researcher serving as the First Author or Corresponding Author, including at least one publication in a Q1 journal within three years.**
2. **External research funding obtained in collaboration with the advisor, totaling at least 500,000 baht within three years, and...**
3. **Knowledge utilization output or a prototype of an innovative process technology at TRL 3 (TRL 3).**
4. **One patent or utility model patent (application number) within three years.**



Advanced/Targeted Post-Master's Program (Humanities-Social Sciences) for three years.

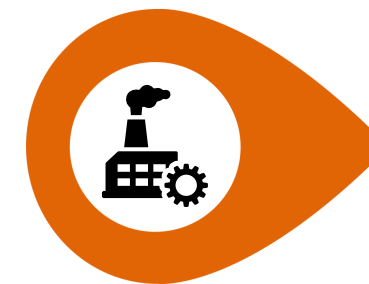
1. **Published in at least one article (Q1-Q4) in the international Scopus database, in collaboration with an advisor, as the First or Corresponding Author, during the second year.**
2. **External research funding obtained in collaboration with the advisor, totaling at least 500,000 baht within three years, and...**
3. **At least one knowledge utilization output, social innovation (SRL 3), public policy contribution, or equivalent output within three years.**

Submission guidelines for Proactive Researchers.



Post-PhD Industrial program, three years.

1. A prototype of an innovative process technology at the field level (TRL4), demonstrating collaborative development with industry within the first year, and the potential to elevate the TRL to a higher level within three years.
2. Research grants from the industrial sector amounting to a minimum of 1 million baht, or research grants from external funding sources in partnership with industry (Matching Fund) of at least 1 million baht, with the industry providing a minimum of 20% (at least 10% in cash), or...
3. A minimum of two publications in the Q1-Q2 category within the ISI Web of Science (Core Collection) database, collaboratively developed with industry and overseen by an advisor, or at least one patent (filed) within the past three years.



Post-Master's degree, Industrial program, three years.

1. A prototype of an innovative technology or process at the field level (TRL4), demonstrating collaborative development with industry within the first year, and the potential to advance the TRL to a higher level within three years.
2. Research funding from industry amounting to a minimum of 500,000 baht, or research funding from external sources outside the university in collaboration with industry (Matching Fund) of at least 500,000 baht, with industry contributing at least 20% (with a minimum of 10% in cash).
3. A minimum of one publication in the Q1-Q2 category within the ISI Web of Science (Core Collection) database, resulting from collaboration with industry and a supervisor, or at least one patent filed within the past three years.

COMPLETING THE PROGRESS REPORT FORM.



[Revised Progress Report Document \(click\)](#)



Completing the progress report form (Excel)

Form 1: Supplementary Essential Information (Counting achievements from 2023 to the current date of assuming office)

| เดือนปีการพิจารณา | หน่วย | PD (PIV Frontier) | | PD (Industry) | PIV (Industry) |
|--|-------|-------------------|-----|---------------|----------------|
| | | SciTech/Health | SMA | | |
| 1. ผลงานนักวิจัย | | | | | |
| 1.1 จำนวนผลงานตีพิมพ์ (Accepted manuscript หรือ Published article) ในฐานข้อมูล ISI Q1/Q2 (สำหรับสาขา SciTech and Health) หรือฐานข้อมูล SCOPUS Q1/Q2 หรือ TCI Tier 1 (สำหรับสาขา SMA) ที่นำส่งเป็นผลงานของโครงการนักวิจัยยุทธศาสตร์พิเศษ ตั้งแต่ พ.ศ. 2566 ถึงปัจจุบัน (วันที่ 18 มี.ค. 2569) | | | | | |
| 1.2 จำนวนผลงานตีพิมพ์ที่นักวิจัยยุทธศาสตร์พิเศษเป็น 1st author/ Correspond author (Accepted manuscript หรือ Published article) ในฐานข้อมูล ISI Q1/Q2 (สำหรับสาขา SciTech and Health) หรือฐานข้อมูล SCOPUS Q1/Q2 หรือ TCI Tier 1 (สำหรับสาขา SMA) ที่นำส่งเป็นผลงานของโครงการนักวิจัยยุทธศาสตร์พิเศษ ตั้งแต่ พ.ศ. 2566 ถึงปัจจุบัน (วันที่ 18 มี.ค. 2569) | | | | | |
| 1.3 จำนวนผลงานตีพิมพ์ที่ตีพิมพ์ (Accepted manuscript หรือ Published article) ที่นักวิจัยในฐานข้อมูล ISI Q1/Q2 (สำหรับสาขา SciTech and Health) หรือฐานข้อมูล SCOPUS Q1/Q2 หรือ TCI Tier 1 (สำหรับสาขา SMA) ตั้งแต่ พ.ศ. 2566 ถึงปัจจุบัน (วันที่ 18 มี.ค. 2569) | | | | | |
| 1.4 จำนวนผลงานตีพิมพ์ที่ตีพิมพ์ (Accepted manuscript หรือ Published article) ที่นักวิจัยยุทธศาสตร์พิเศษเป็น 1st author/ Correspond author ในฐานข้อมูล ISI Q1/Q2 (สำหรับสาขา SciTech and Health) หรือฐานข้อมูล SCOPUS Q1/Q2 หรือ TCI Tier 1 (สำหรับสาขา SMA) ตั้งแต่ พ.ศ. 2566 ถึงปัจจุบัน (วันที่ 18 มี.ค. 2569) | | | | | |
| 1.5 บุคลากรที่ได้รับจากแหล่งทุนภายนอกภาครัฐ และ/หรือ หน่วยงานอื่นนอกเหนือจากนี้ ที่นักวิจัยเป็นหัวหน้าโครงการ (PI) | | | | | |
| 1.6 บุคลากรที่ได้รับจากแหล่งทุนภายนอกภาครัฐ และ/หรือ หน่วยงานไม่แสวงหาผลกำไร ที่เข้าร่วมโครงการนี้เป็นที่ปรึกษา | | | | | |
| 1.7 บุคลากรที่ได้รับจากแหล่งทุนภายนอกภาครัฐ และ/หรือ หน่วยงานอื่นนอกเหนือจากนี้ ที่นักวิจัยเป็นหัวหน้าโครงการ (PI) | | | | | |
| 1.8 บุคลากรที่ได้รับจากแหล่งทุนภายนอกภาครัฐ และ/หรือ หน่วยงานอื่นนอกเหนือจากนี้ที่เข้าร่วมโครงการนี้เป็นที่ปรึกษา | | | | | |
| 1.9 จำนวนตีพิมพ์ฉบับเต็มที่มีผลกระทบสูง (High Impact) หรือ TRL 3 (สำหรับ Frontier) หรือ TRL 4 (สำหรับ Industry) หรือ SIL 4 (สำหรับ SMA) | | | | | |
| 1.10 จำนวนนักวิจัยที่ตีพิมพ์และสิทธิบัตร | | | | | |
| 1.11 จำนวนนักวิจัยที่ตีพิมพ์และสิทธิบัตร | | | | | |
| 1.12 จำนวนนักวิจัยที่ตีพิมพ์และสิทธิบัตร | | | | | |
| 1.13 จำนวนนักวิจัยที่ตีพิมพ์และสิทธิบัตร | | | | | |
| 2. ความเชี่ยวชาญเฉพาะด้านของนักวิจัยยุทธศาสตร์พิเศษ (Niche) | | | | | |
| 3. ความสอดคล้องของงานวิจัยกับ core business ของมหาวิทยาลัย | | | | | |
| 4. ผลงานและบทบาทอาจารย์เป็นที่ปรึกษา | | | | | |
| 4.1 จำนวนผลงานตีพิมพ์ตั้งแต่ปี พ.ศ. 2564-ปัจจุบัน (วันที่ 18 มีนาคม 2569) ที่เป็น 1st author/ Correspond author (Accepted manuscript หรือ Published article) ในฐานข้อมูล ISI Q1/Q2 (สำหรับสาขา SciTech and Health) หรือฐานข้อมูล SCOPUS Q1/Q2 หรือ TCI Tier 1 (สำหรับสาขา SMA) | | | | | |
| 4.2 H index (5 ปีล่าสุด) | | | | | |
| 4.3 บุคลากรจากแหล่งทุนภายนอกภาครัฐ และ/หรือ หน่วยงานไม่แสวงหาผลกำไร ที่นักวิจัยเป็นที่ปรึกษา (PI) ที่ได้รับระหว่างปี พ.ศ. 2564-2569 | | | | | |
| 4.4 บุคลากรจากแหล่งทุนภายนอกภาครัฐ และ/หรือ หน่วยงานอื่นนอกเหนือจากนี้ที่นักวิจัยเป็นที่ปรึกษา (PI) ที่ได้รับระหว่างปี พ.ศ. 2564-2569 | | | | | |



Completing the progress report form (Excel)

Form 1: Supplementary Essential Information (Counting achievements from 2023 to the current date of assuming office)

1. Potential of researchers in proactive strategic inquiry.

1.1) The quantity of publications (accepted manuscripts or published articles exclusively) in the ISI Q1/Q2 database (pertaining to SciTech and Health domains) or the SCOPUS Q1/Q2 or TCI Tier 1 database (related to the SHA domain) submitted as part of the proactive strategic researcher initiative.

1.2) The count of publications in which the proactive strategic researcher serves as the first author or corresponding author (accepted manuscript or published article only) within the ISI Q1/Q2 database (for SciTech and Health fields) or the SCOPUS Q1/Q2 or TCI Tier 1 database (for SHA field), submitted as part of the proactive strategic researcher project.

1.3) The cumulative count of publications (accepted manuscripts or published articles exclusively) that the researcher possesses in the ISI Q1/Q2 database (pertaining to SciTech and Health fields) or the SCOPUS Q1/Q2 or TCI Tier 1 database (related to the SHA field) from 2023 to the present. This encompasses the researcher's total publications in collaboration with their advisors.

1.4) Total number of publications (accepted manuscripts or published articles only) in which the strategic researcher serves as the first author or corresponding author in the ISI Q1/Q2 database (for SciTech and Health fields) or the SCOPUS Q1/Q2 or TCI Tier 1 database (for SHA field) from 2023 to the present. This encompasses the researcher's collaborative efforts with their advisors.

1.5) Research grants obtained from external funding sources beyond government and/or non-profit organizations in which the researcher serves as the principal investigator (PI).

1.6) Research grants obtained from external funding sources beyond government and/or non-profit organizations, which are solicited collaboratively with the advisor.

1.7) Research grants obtained from external funding sources beyond the industry and/or private sector, in which the researcher serves as the principal investigator (PI).

1.8) Research grants obtained from external funding sources beyond the industry and/or private sector, applied for collaboratively with an advisor.

Completing the progress report form (Excel)

Form 1: Supplementary Essential Information (Counting achievements from 2023 to the current date of assuming office)

1.1. The potential of proactive strategic researchers (continued)

1.9) Quantity of technology prototypes/process prototypes: TRL 3 (for Frontier) or TRL 4 (for Industry) or SRL 4 (for SHA)

1.10) Quantity of patents that have been assigned patent numbers.

1.11) Total patents filed.

1.12) Quantity of utility model patents that have been awarded utility model patent numbers.

1.13) Total utility model patents filed.

2. The specialized knowledge of exceptional proactive strategic researchers (Niche).

3. Alignment of research with university consortiums.



Completing the progress report form (Excel)

Form 2: Overview Page

(Counting achievements from 2023 to the current date of assuming office)

1. Summary of information to be included in the Proactive Research Progress Report.



| Personal Information & Summary of Project Outputs | |
|---|---------------------|
| Fill appropriate information in column B (in blue color) OR choose from the "dropdown" | |
| Updated as part of the progress report of (n) months | ไม่จำกัด (Dropdown) |
| Name-Surname | |
| Name-Surname (used in publications) | |
| Position Number | |
| Assigned Work Place | |
| Starting date of work contract (yyyy/mm/date) | |
| Researcher type | ไม่จำกัด (Dropdown) |
| Academic area | ไม่จำกัด (Dropdown) |
| Name-Surname of Advisor (in Thai) | |
| Name-Surname of Advisor (used in publications) | |
| Advisor's Affiliation | |
| Research Project Title | |
| Summary of Publications (More detail in "Publications (P)" sheet) | |
| Number of Online/Published articles with DOI (Total number of articles disregarding the citation of the proactive research program) | |
| Number of Online/Published articles with DOI (Articles cited the proactive research program ONLY) | |
| Number of Accepted articles (Total number of article disregarding the citation of the proactive research program) | |
| Number of Accepted articles (Articles cited the proactive research program ONLY) | |
| Number of Submitted Manuscript (Total number of manuscript disregarding the citation of the proactive research program) | |
| Number of Submitted Manuscript (Manuscript cited the proactive research program ONLY) | |
| Summary of Research Funding (More detail in "Research Funding (F)" sheet) | |
| Number of research projects granted by non-CMU agencies | |
| Total funding budget (in Thai Baht) | |
| Number of research projects submitted to non-CMU agencies (Under review/Wait for result) | |
| Summary of Research Outputs with Technology Readiness/Social Readiness (More detail in "TRL/SRL" sheet) | |
| Number of research outputs (prototype/technology/ etc..) with TRL 1-3 | |
| Number of research outputs (prototype/technology/ etc..) with TRL 4 or higher | |
| Number of research outputs (prototype/technology/ etc..) with SRL 1-3 | |
| Number of research outputs (prototype/technology/ etc..) with SRL 4 or higher | |
| Summary of IPs (More detail in "IPs" sheet) | |
| Number of Patents (Filing) | |
| Number of Patents (Issuance/Granted) | |
| Number of Petty Patents (Filing) | |
| Number of Petty Patents (Issuance/Granted) | |
| Number of Industrial Design (Filing) | |
| Number of Industrial Design (Issuance/Granted) | |
| Others | |
| Summary of Research Networks (More detail in "Networks" sheet) | |
| Number of International collaborations/networks | |
| Number of National collaborations/networks | |
| Summary of Industrial Collaboration (More detail in "Industry" sheet) | |
| Number of industrial networks | |
| Total funding budget allocated from industry (in Thai Baht) | |

Completing the progress report form (Excel)

Form 2: Overview Page (Counting achievements from 2023 to the current date of assuming office)

1. Summary of information to be included in the Proactive Research Progress Report.

- Background information of the researcher.
- Name-Surname
- Name utilized in published works
- Position number / Work location
- Contract commencement date
- Categories of researchers and academic disciplines.
- Advisor's details (name and organization)

Research Initiative Title

2.2. Publications

- Number of Articles Published / Online (with DOI)
- Number of approved articles
- Number of articles submitted
- Divided into:
 - All projects
 - Work cited from the Proactive ResearchHeR initiative.

3. Research Financing

- The quantity of projects that obtained funding from external organizations.
- Total budget allocated for research funding.
- The quantity of grant proposals presently under review.

4. Research Outputs (TRL–SRL)

- Number of prototypes/technologies categorized by TRL level.
- Number of social outcomes based on SRL level.

5. Intellectual Property Rights

- Number of patents (submitted / granted)
- Number of utility model patents (submitted / granted)
- Number of industrial product designs (submitted for registration / approved)

Alternative outcomes

6. Collaborative research network.

- Number of global partnerships
- Number of national partnerships
- 7. Partnership with the industrial sector.
 - The quantity of networks or partnerships with the industrial sector.
 - Funding from the industrial sector.

Completing the progress report form (Excel)

Form 3 Publications (P) (Counting achievements from 2023 to the current date of assuming office)

| Details of Publications | | | | | | | | | | | | | | | |
|--|---|---|---------------------------|--|---|---|---|--------------|---|---|---|--|---------------------------------|--------------------|------------------------------------|
| Fill in information of all the publications made during the CMU proactive researcher contract duration | | | | | | | | | | | | | | | |
| Entry (ลำดับ) | Which progress report (1st, 2nd, ...etc.) this article first appears? รายการที่ | Does this article cite CMU proactive research program? (ตอบว่าใช่/ไม่/ไม่ทราบ/ไม่มี/อื่นใด กรุณาระบุว่าอย่างไร) ใช่/ไม่/ไม่ทราบ/ไม่มี/อื่นใด (Yes/No) | Article Title ชื่อภาษาไทย | List of all the authors รายชื่อผู้แต่ง | What is your author status? สถานะผู้แต่งบทความนี้? (First Author, Co-Author, Co-Author, Co-First Author, First-Corr Author) | What is the author status of your advisor? สถานะผู้เขียนที่ปรึกษา? (First Author, Co-Author, Co-Author, Co-First Author, First-Corr Author) | Is there at least one author affiliated to international institute/university? มีอย่างน้อย หนึ่งผู้แต่งที่สังกัดสถาบัน/มหาวิทยาลัยต่างประเทศ? | Journal Name | What is the database the journal indexed in? ฐานข้อมูลวารสารที่ตีพิมพ์? | If the data base the journal indexed in is not ISI Scopus or TCI Tier 1, please specify. กรุณาระบุว่าวารสารที่ตีพิมพ์ ISI Scopus หรือ TCI Tier 1 หรือไม่? (ถ้าไม่ใช่) | Quartiles of the journal (ONLY for ISI/Scopus indexing journal) | What is/are the SCOPUS SDGs the article impacts? (Can report more than one SDG, e.g. SDG1;SDG2;SDG5) ระบุ SDG ที่ถูกกระทบ (ระบุได้มากกว่า 1 SDG) | Publication Status สถานะตีพิมพ์ | DOI (if available) | Link to article Url (if available) |
| | คลิกเพื่อดู (Click to expand) | | | | | | | | | | | | | | |
| | คลิกเพื่อดู (Click to expand) | | | | | | | | | | | | | | |
| | คลิกเพื่อดู (Click to expand) | | | | | | | | | | | | | | |

Publication Reporting Requirements

Research projects submitted under the CMU Proactive Research Program must not replicate projects funded by other internal university sources allocated by the Research Administration Office, including:

- RG/TG Capital
- Remuneration for publications.
- Grant for the presentation of research internationally.
- Visiting Researcher Fellowship
- Young to Mid-Career Researcher Grant (from the National Science and Technology Development Agency)
- Fundamental Fund (FF)

Since these performance results serve as key performance indicators in reporting to the university, the same output cannot be used for reporting under multiple funding programs.

Exception: **Page Charge fees** may also be requested from other projects.

Further clarification (Column C: Does this article reference the CMU Proactive Research Program?)

Select “Yes” only if the article is being reported under the CMU Proactive Research Program. If the article has already been reported under another research grant administered by the Office of Research Administration (e.g., an RG grant), select “No”, as the same publication cannot be reported more than once across different funding programs.

If an article has more than one Proactive Researcher as a co-author, and one researcher (e.g., Researcher A) has already reported the article and selected “Yes” as the First Author, other Proactive Researchers (e.g., Researcher B), even if they are co-authors, must select “No”. This is because the publication can be counted as an output of only one Proactive Researcher and cannot be reported multiple times under the Program.

Completing the progress report form (Excel)



Form 4 Research Funding (F) (Counting achievements from 2023 to the current date of assuming office)

| Details of Research Funding | | | | | | | | | | | | | |
|--|---|--|--|---|--|--|---|---|---|---|---|-----|--|
| Fill in information of all the fundings made during the CMU proactive researcher contract duration | | | | | | | | | | | | | |
| Entry | Which progress report (1st, 2nd, etc.) this article first appears? <small>รายงานฉบับที่</small> | Project Title <small>ชื่อโครงการ</small> | Name of Funding Agency <small>ชื่อหน่วยงาน</small> | Budget (in Thai Baht) <small>งบประมาณ (บาท)</small> | Name-Surname of Project PI <small>ชื่อ-สกุล หัวหน้าโครงการ</small> | Affiliation of Project PI <small>สังกัด หัวหน้าโครงการ</small> | What is your role in the project? (PI, Co-PI, Researcher) | What is your contribution in % in the project (as reported in Research CMU)? <small>สัดส่วนการมีส่วนร่วมในโครงการที่ได้ (ถ้ามี) ในระบบ Research CMU) ระบุเป็น ร้อยละ(%)</small> | Project Status <small>สถานะโครงการ (Under review/Granted)</small> | Project proposal submitted date in yyyy/mm/dd <small>(in case of under review) วันที่ยื่นข้อเสนอโครงการ</small> | Project Duration <small>ระยะเวลาดำเนินการ (as appeared in contract in yyyy/mm/dd)</small> | | Project NUMBER in CMU Research <small>รหัสโครงการที่ CMU Research (if available)</small> |
| | | | | | | | | | | | Start | End | |
| | [Link to template] | | | | | | | | | | | | |
| | [Link to template] | | | | | | | | | | | | |

Research Funding Reporting Requirements

KPI calculations will include only research grants obtained from sources outside Chiang Mai University. Grants allocated through the Office of Research Administration, such as RG grants, TG grants, Mid-Career and New Researcher Grants, and other internal funding schemes, will not be included. In addition, Fundamental Fund (FF) grants are considered internal funding and therefore will not be counted toward the external funding KPI.

For Matching Fund projects, only the portion of the budget contributed by external funding sources will be counted.

The funding value credited to each researcher will be calculated based on the field “What is your contribution in % in the project (as reported in Research CMU),” which reflects the researcher’s percentage contribution recorded in the Research CMU system.

Example of Research Funding Calculation Based on KPI Contribution

If a project is awarded a budget of 3,000,000 baht:

- If the researcher is the Principal Investigator (100%), the counted funding amount is 3,000,000 baht.
- If the researcher contributes 33.3% as a co-investigator, the counted funding amount is 1,000,000 baht.
- Researchers and project leaders are required to record complete information on funded projects in the CMU Research system (<https://research.mis.cmu.ac.th/>) so that the information can be used as reference data for KPI evaluation and calculation.

Completing the progress report form (Excel)

Form 5: Technology Readiness Level (TRL)/Social Readiness Level (SRL)

| Details of Research Outputs with Technology Readiness/Social Readiness | | | | |
|---|--|---|--------------------------------------|--------------------------------|
| Fill in information of all the publications made during the CMU proactive researcher contract duration (If the reported work has not been evaluated for its TRL/SRL, please fill out the provided form (1 | | | | |
| Entry | Which progress report (1st, 2nd, ..etc..) this article first appears? รายงานครั้งที่? | Type of submitted TRL/SRL ประเภทสิ่งส่งมอบ | Title of submitted work ชื่อผลงาน | TRL/SRL Level ระดับ TRL/SRL |
| | โปรดเลือก(Dropdown) | | | |
| | โปรดเลือก(Dropdown) | | | |

TRL/SRL reporting requirements.

- Typically, Technology Readiness Level (TRL) and Social Readiness Level (SRL) reporting requires the use of a designated form, which is available for download at <https://ora.oou.cmu.ac.th/แบบฟอร์มรายงานความก้าว-2/>. Researchers, particularly those in industrial sectors where TRL KPIs are obligatory, are urged to complete this form meticulously.
- All submissions detailed in this section will be assessed by the Technology Licensing Office (TLO) of Chiang Mai University. This evaluation aims to determine the potential of the submissions for further development, technology transfer, or future advantages to the university.

Completing the progress report form (Excel)

Form 6: Intellectual Property Rights (IPRs) (Counting achievements from 2023 to the current date of assuming office)

| Details of IPs | | | | | | | | | |
|---|--|---|--|-------------------------------------|------------------------------------|---|------------------------------------|-----------------------------|--|
| Fill in information of all the IPs made during the CMU proactive researcher contract duration | | | | | | | | | |
| Entry | Which progress report (1st, 2nd, ..etc..) this article first appears? รายงานครั้งที่? | Type of Ips ประเภทของทรัพย์สินทางปัญญา | Title of submitted work ชื่อทรัพย์สินทางปัญญา | IP Status สถานะทรัพย์สินทางปัญญา | Filing number เลขที่คำขอ/เลขที่ | Filing date วันที่ยื่นจด/รับจด (yyyy/mm/dd) | Issued Number (if already granted) | Issued date (yyyy/mm/dd) | Link to URL of submitted work. โปรดแนบ LINK |
| | โปรดเลือก(Dropdown) | | | | | | | | |
| | โปรดเลือก(Dropdown) | | | | | | | | |

Intellectual Property (IP) Reporting Requirements

Please report solely on projects for which an application for intellectual property registration has been submitted and includes a valid filing number. Complete the following information:

- Categories of intellectual property (e.g., patents, utility models, product designs, etc.)
- Title of Work/Intellectual Property Name
- Intellectual property status (e.g., pending registration or approved)
- Application number (Filing number)
- Date of submission

If approved, please provide the patent or utility model number and issuance date, along with a link to the pertinent work or documents, if applicable. The work detailed in this section must be...

Only projects with successfully submitted registrations may be considered as project outcomes.



Completing the progress report form (Excel)

Form 7: Research Networks

(Counting achievements from 2023 to the current date of assuming office)

Details of Research Networks

| Fill in information of all the publications made during the CMU proactive researcher contract duration | | | | | | | | |
|--|--|---|--|-------------------|--|--|---|--|
| Entry | Which progress report (1st, 2nd, ..etc..) this article first appears? รายงานครั้งที่? | Is the collaboration international or national? ระดับความร่วมมือ | Name of collaborating university/institute ชื่อหน่วยงาน | Country ประเทศ | Thai correspondence ชื่อผู้ประสานงานหลัก (ฝ่าย มช.) | Correspondence of partner university/institute ชื่อผู้ประสานงานหลัก (ฝ่าย หน่วยงานภายนอก) | Is there any MOU between CMU and partner university/institute? การมี MOU ระหว่างหน่วยงาน | Additional Information (if any) ข้อมูลเพิ่มเติม (ถ้ามี) |
| | ไปรคเลือก(Dropdown) | | | | | | | |
| | ไปรคเลือก(Dropdown) | | | | | | | |

The reporting requirements for research networks necessitate the documentation of actual research collaboration networks that were active during the researcher's contract period. The degree of collaboration should be specified as either international or national. The collaboration must pertain to research under the strategic researcher project and should encompass distinct collaborative activities such as joint research, co-authored publications, research development, or collaborative academic endeavors. If a Memorandum of Understanding (MOU) exists between organizations, it may be included to substantiate the network information.

Completing the progress report form (Excel)

Form 8: Industrial Partnerships (Counting achievements from 2023 to the current date of assuming office)

| Details of Industrial Collaborations | | | | | | | | | |
|--|---|---------------------------------------|---|--|--|--|---|---|--|
| Fill in information of all the publications made during the CMU proactive researcher contract duration | | | | | | | | | |
| Entry | Which progress report (1st, 2nd, ..etc..) this article first appears? รายงานครั้งที่? | Company Name ชื่อบริษัท/อุตสาหกรรม | Type of industrial support (In kind/In cash) | Budget (if any, in Thai Baht) งบประมาณที่ได้รับสนับสนุน (บาท) | Title of collaborating project (ชื่อโครงการความร่วมมือ) | What is your role in the project? บทบาทของนักวิจัยในโครงการ | What is your contribution in % in the project (as reported in Research CMU) ? สัดส่วนการมีส่วนร่วมในงานของนักวิจัย ระบุเป็นร้อยละ(%) | Name-Surname of company corresponding person ชื่อผู้ประสานงานหลัก (ฝ่าย บริษัท/อุตสาหกรรม) | Contact email ผู้ประสานงานหลัก (ฝ่าย บริษัท/อุตสาหกรรม) |
| | โปรดเลือก(Dropdown) | | | | | | | | |
| | โปรดเลือก(Dropdown) | | | | | | | | |

The research funding reporting requirements stipulate collaboration with companies or industries pertinent to the project's research, encompassing the following information:

- Company or industry designation
- Type of assistance (Monetary / Non-monetary)
- Budget received, if applicable.
- Title of the collaborative initiative
- The function of researchers within the project.
- Percentage of researcher participation (%) as indicated in the Research CMU system.
- Name and email address of the primary contact individual from the company or industry.



Further clarification: Reporting industry collaborations in this section will not duplicate Form 4: Research Funding (F). This section is dedicated to documenting industry collaborations, specifically serving as a critical KPI for researchers in the industry category, and is a mandatory KPI for the project.